

# COURSE ILLUSTRATIONS

## COURSE DISPLAY SHORTHAND

WINDWARD/LEEWARD COURSES ARE DESIGNATED WITH A "W" FOR COURSES THAT FINISH UPWIND, AND AN "L" FOR COURSES THAT FINISH DOWNWIND. THE NUMERAL ACCOMPANYING THE COURSE DESIGNATION INDICATES THE NUMBER OF LEGS OF THE COURSE.

ALL OTHER COURSES ARE DESIGNATED BY A COMBINATION OF LAPS DISPLAYED USING THE TYPE OF LAP (T = TRIANGLE LAP), A NUMBER INDICATING THE NUMBER OF SUCCESSIVE REPETITIONS OF THAT PARTICULAR TYPE OF LAP, AND A MODIFIER (+) IF THE FINISH IS TO BE TO WINDWARD.

### WINDWARD/LEEWARD EXAMPLES

- W3 = 3 LEGS (FINISHING UPWIND)
- W5 = 5 LEGS (FINISHING UPWIND)
- L4 = 4 LEGS (FINISHING DOWNWIND)
- L6 = 6 LEGS (FINISHING DOWNWIND)

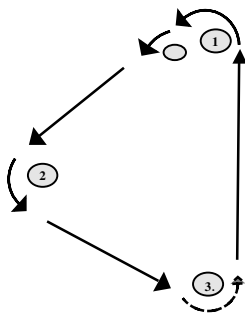
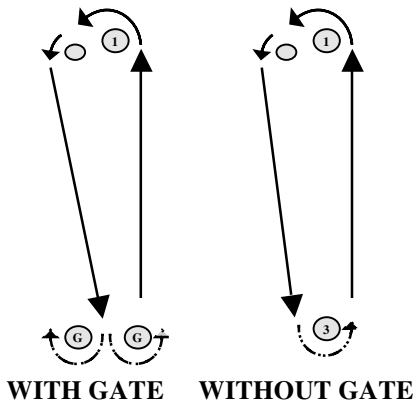
### OTHER COURSE EXAMPLES

- WT+ = WINDWARD LEEWARD FOLLOWED BY TRIANGLE PLUS UPWIND LEG TO FINISH
- W2T = TWO WINDWARD LEEWARD LAPS PLUS A TRIANGLE, FINISHING DOWNWIND
- O+ = TRIANGLE LAP FOLLOWED BY A WINDWARD LEEWARD LAP PLUS UPWIND LEG TO FINISH

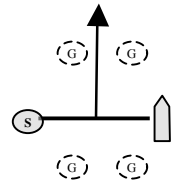
NOTE: AN RC BOAT MAY BE SUBSTITUTED FOR MARK(S) (S) OR (F) ON STARTING OR FINISHING LINES

### W = WINDWARD/LEEWARD LAP

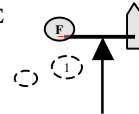
### T = TRIANGLE LAP



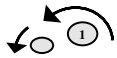
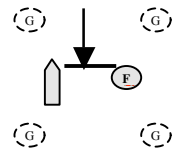
### STARTING LINE



### + = UPWIND FINISHING LINE



### DOWNWIND FINISHING LINE



1 = WINDWARD MARK WITH OFFSET



G = LEEWARD GATE



2 = GYBE MARK

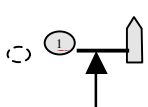


3 = LEEWARD MARK IF TRIANGLE OR NO GATE

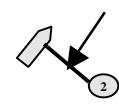


MARKS TO BE IGNORED IF PRESENT

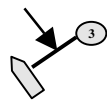
### FINISHING LINES - RULE 32 (REDUCED NUMBER OF LEGS)



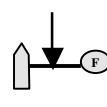
UPWIND FINISHING LINE



GYBE MARK FINISHING LINE



LEEWARD MARK FINISHING LINE



DOWNWIND FINISHING LINES

### ALLOWABLE ROUND-AN-END COURSES WITH MID-STARTING LINE BOAT (ALSO SEE SIs)

